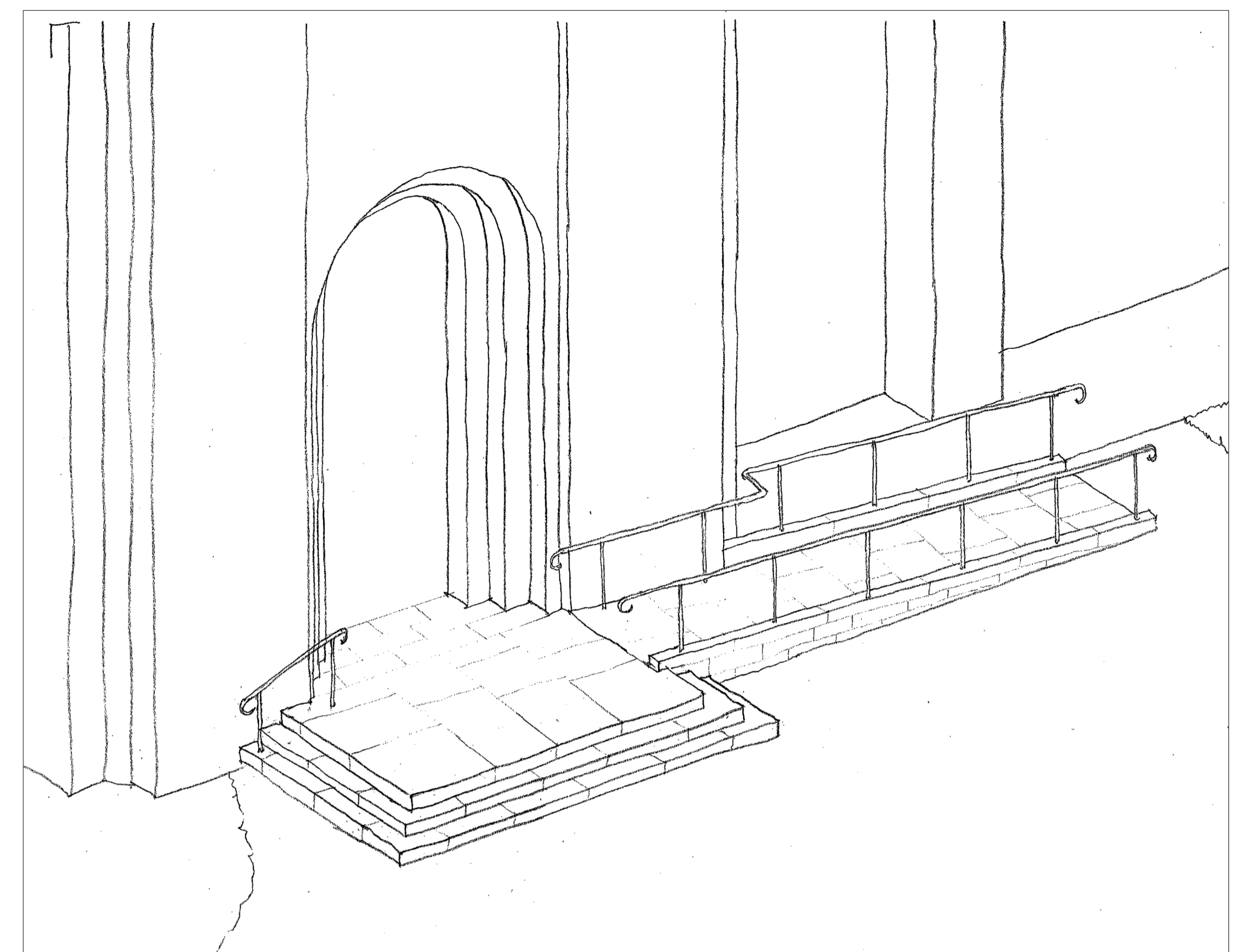
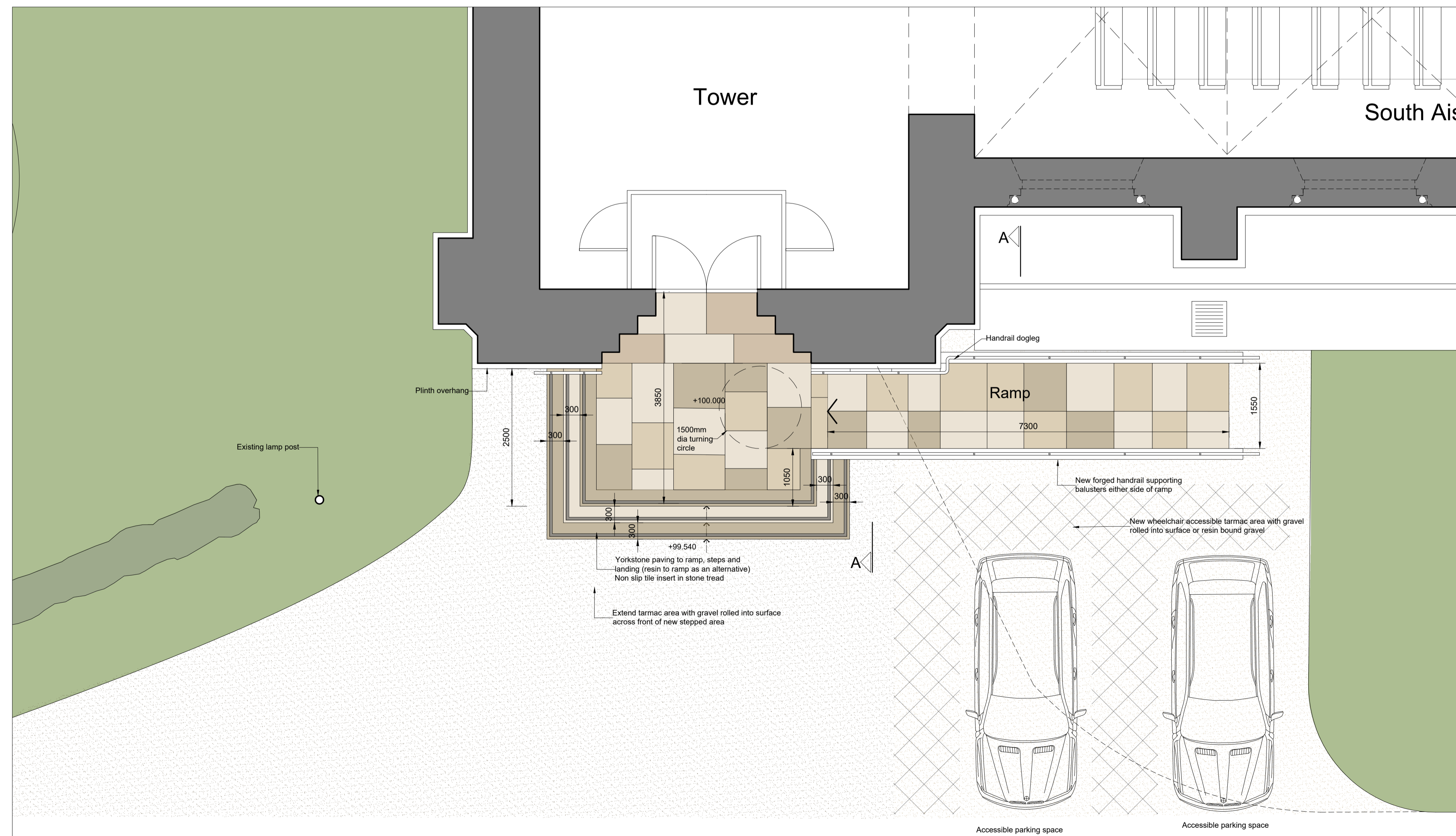


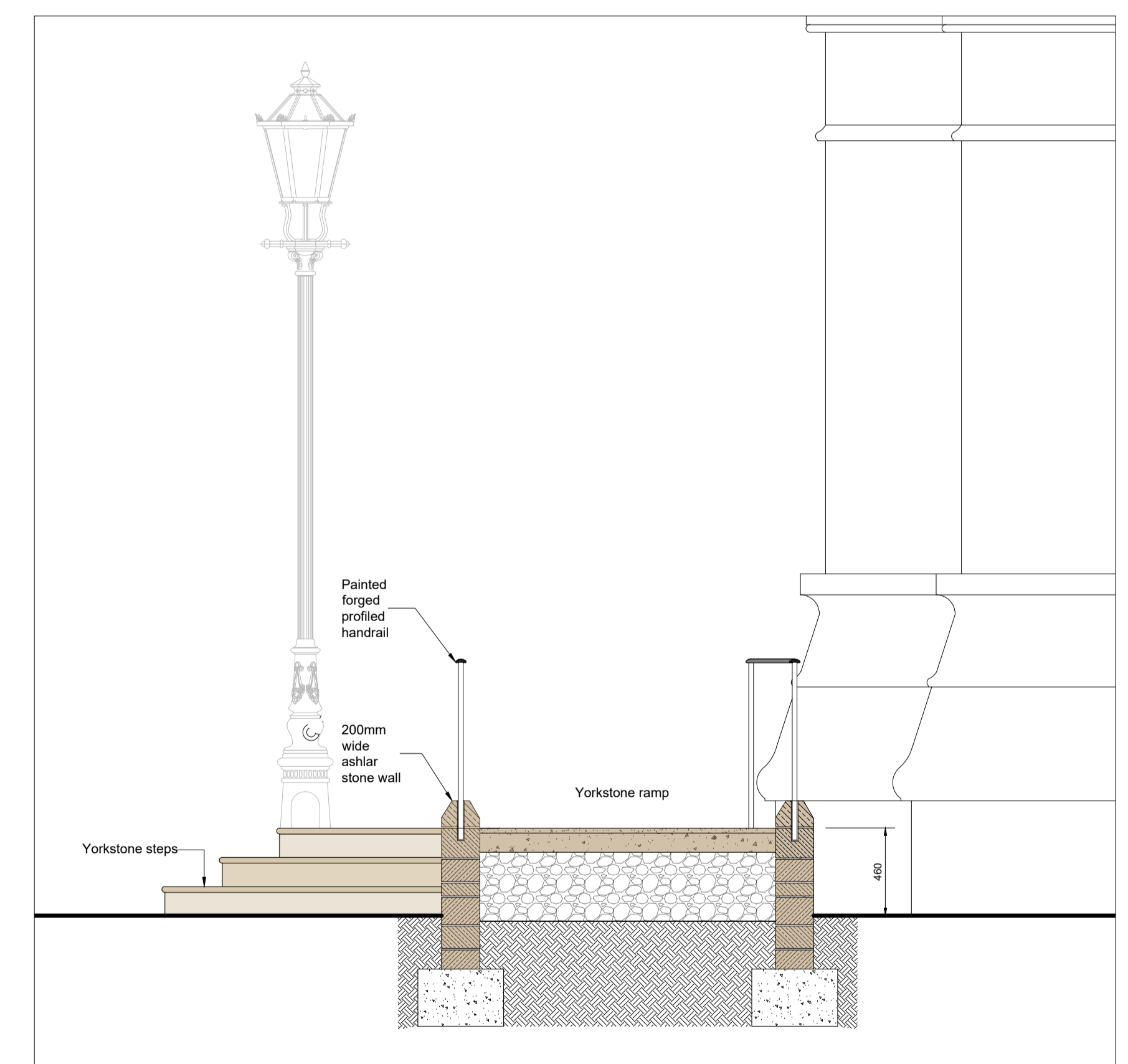
South Elevation 1:50



3D Sketch



Part Plan 1:50



Section A-A 1:25

Rev.C 19/12/25 landing increased in size  
 Rev.B 02/06/25 parking bay added.  
 Rev.A 29/10/24 dimensions added.

Client	PCC St Mary, Woburn	Drawn	RC
Project	New Ramp	Date	Aug 2024
Drawing	Feasibility	Scale	1:50, 1:25@A1

 <b>Stimson Walton Bond</b> Chartered Architects 59 York Road Northampton NN1 5QL E mail: enquiries@swbarchitects.co.uk	CDM Principal Designer Telephone: (01604) 633155 Web: www.stimsonwaltonbond.com	Drawing No.	2024/079/100
		Revision	C